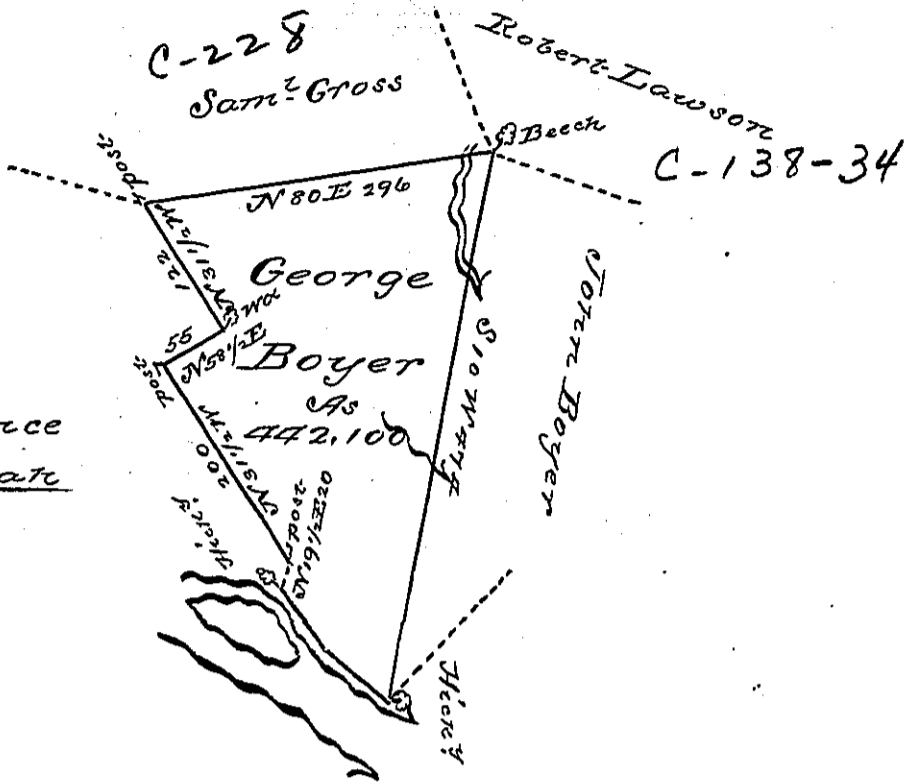


Courses & Distance
 up Susquehanna
 River
 N 29 1/2 W. 72
 N 40 1/2 W. 62
 134



In pursuance of a Warrant Dated ^{the 7th} 15 Jan'y
 1794 Surveyed the 12th day of December 1794
 to George Boyer the above Described Tract
 of Land Situate on the east side of the
 Susquehanna river between Westhope and
 Tuscarora Creeks in Luzerne County contain-
 ing Four hundred and forty two acres and
 one hundred perches and the allowance of six
 per cent

Dan^l Brodhead Esquire } Arty Crothers D^r
 Surveyor General }

IN TESTIMONY that the above is a copy of the original remaining on file in
 the Department of Internal Affairs of Pennsylvania, made
 conformably to an Act of Assembly approved the 16th day of
 February, 1833, I have hereunto set my Hand and caused
 the Seal of said Department to be affixed at Harrisburg,
 this fifth day of April 1898

James W. Latta
 Secretary of Internal Affairs.